

A photograph of a demolition site at night. In the foreground, three workers wearing full-body white protective suits and respirators are working on a pile of rubble. In the background, a large, multi-story building is being demolished, with its skeletal structure visible against a dark sky. The scene is illuminated by artificial lights, creating a high-contrast, industrial atmosphere.

Doetsch

INDUSTRIAL SERVICES, INC.

Hydro-Excavation

What is Hydro-Excavation?

Hydro-Excavation is a non-mechanical and non-destructive process that combines water (up to 3000 psi) and a high flow of moving air to simultaneously excavate and evacuate earth at a controlled rate. The resulting earth and water slurry are conveyed via an 8" tube to a truck-mounted debris tank. This process allows for quick and clean excavations that require less backfill, less restoration, and less environmental impact than conventional mechanical digging methods.



What is a Hydro-Excavator?

A Hydro-Excavator is a completely self contained unit that is comprised of several different pieces of equipment.

Debris Storage Tank

Fresh Water Storage Tank



Pressurized Water Pump Compartment

Water Heater

Why Hydro-Excavate?

Unearthing Safety

- 1) **Safe method of damage free uncovering of energized/non-energized utilities for visible confirmation of location or repair.**
- 2) **Faster than hand digging.**
- 3) **Safer than hand digging - our process does not require workers to enter unsloped or unshored excavations.**
- 4) **Precise excavation - less backfill, less restoration, less environmental impact.**
- 5) **Less labor force required.**



Use Hydro-Excavation with Traditional Digging Methods

- 1) **Daylight utilities - uncover utilities for visual confirmation of depth and location. Allows daylight to illuminate previously buried utilities, hence the industry term "Daylighting."**
- 2) **Once utility placements are confirmed, mechanical equipment can dig with confidence and eliminate accidental line damage.**



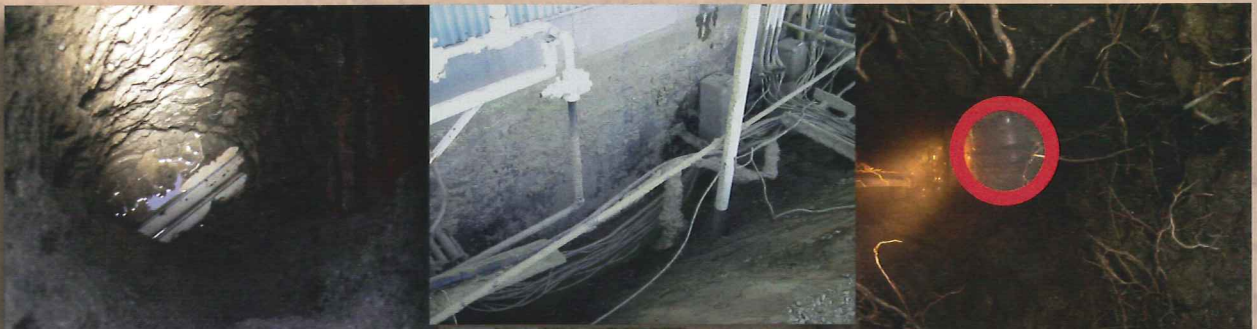
Hydro-Excavation at Work



Trenching/ Mass Excavation



Remote Excavation



Utility Location



Cold Weather? Frozen Ground? The Hot Answer...

Our trucks are equipped with water heaters that allow for excavation in any depth of frost.



- **Save costs on expensive ground thawing equipment.**

- **Eliminate hazards and noxious emissions associated with coal firing or wood burning.**



The Doetsch Approach

Efficient Removal, Replacement and Restoration

After excavation, Doetsch Industrial Services can follow by pneumatically conveying backfill (soil, rock, or sand). The minimal disturbance of hydro-excavation will not be made worse by heavy equipment traversing the area to backfill nor add to the restoration costs because of that equipment. Doetsch Industrial Services will blow the material through rubber hose from the pneumatic conveyor. Once again, no additional footprint is made by our specialized fleet of equipment.

After backfilling, Doetsch Industrial Services can offer complete site stabilization and restoration. This is achieved by a recognized innovative method utilizing recycled yard waste injected with seed "blown" as a blanket or conveyed into Filtrexx™ products to solve all your erosion control needs.

Our services do not stop here: We are a fully licensed HAZMAT transporter. We employ HAZMAT trained individuals with credentials not limited to the following: Safe2Work™, confined space, power source, trenching and shoring, etc. under the guidance of a full time safety director. We own a complete fleet of wet or dry vacuum equipment, hydro-blasters, and CCTV pipeline inspection vehicles. We can service all your concerns without the added burden of retaining additional subcontractors for your projects. A single call to Doetsch Industrial Services brings you over 100 years of history, experience, and most importantly, excellence.



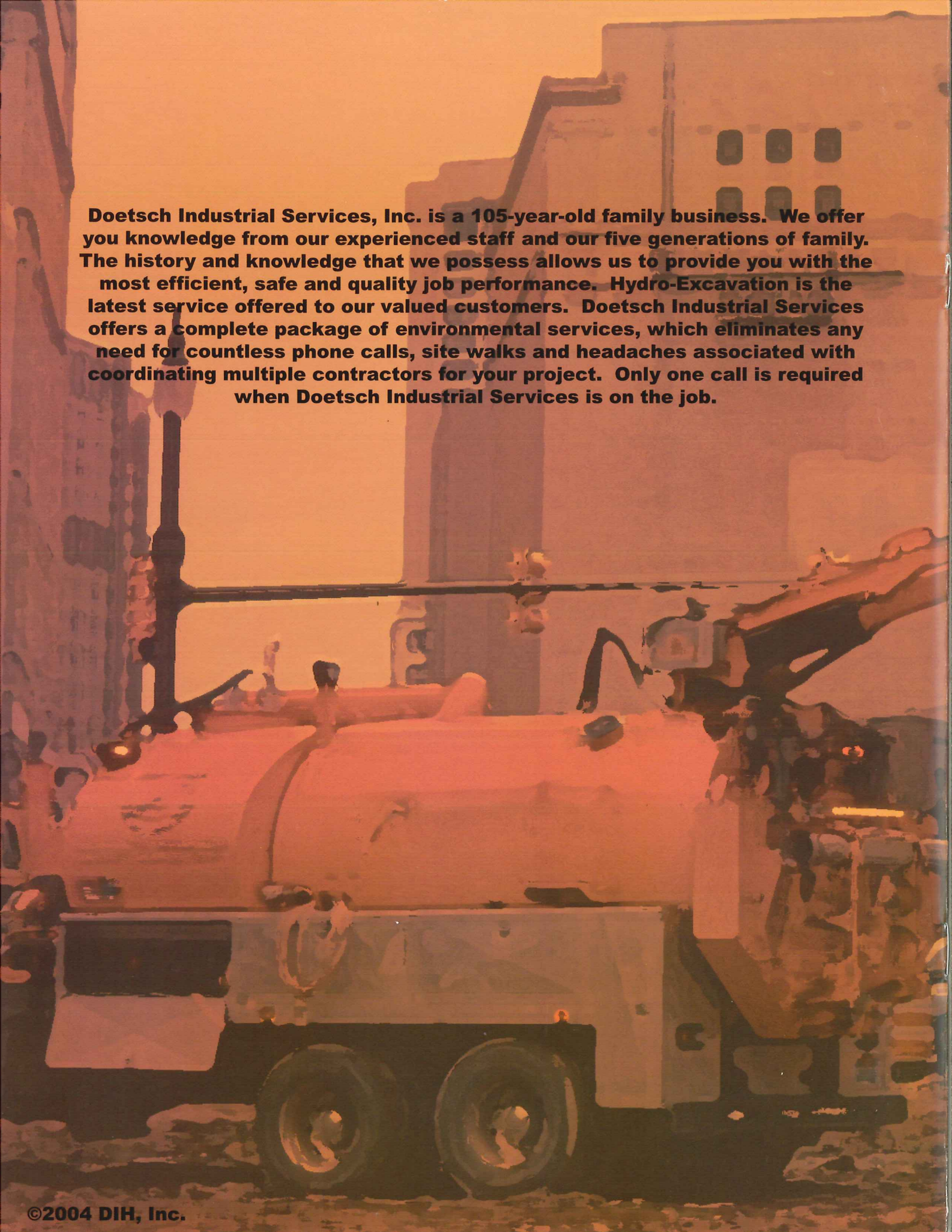


- **Rock Application**



- **Site Restoration**
- **Erosion Control**





Doetsch Industrial Services, Inc. is a 105-year-old family business. We offer you knowledge from our experienced staff and our five generations of family. The history and knowledge that we possess allows us to provide you with the most efficient, safe and quality job performance. Hydro-Excavation is the latest service offered to our valued customers. Doetsch Industrial Services offers a complete package of environmental services, which eliminates any need for countless phone calls, site walks and headaches associated with coordinating multiple contractors for your project. Only one call is required when Doetsch Industrial Services is on the job.